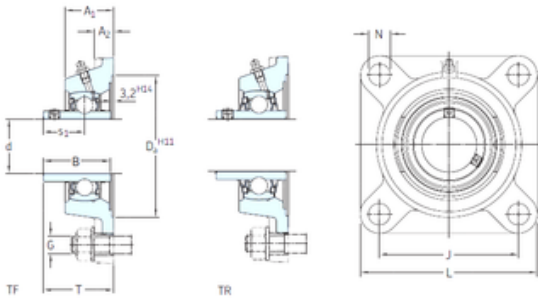




IFB Roller Industry Co.,Ltd

SKF FY 65 TF bearing units

Bearing No. FY 65 TF



FY 65 TF Bearing 2D drawings and 3D CAD models

Bore Diameter	65 mm
d	65 mm
Da	161,9 mm
s1	42,9 mm
A1	52,5 mm
B	68,3 mm
G	16 mm
J	149,5 mm
L	187 mm
N	18 mm
T	76,9 mm
A2	17 mm
Weight	5,30 Kg
Basic dynamic load rating (C)	57,2 kN
Basic static load rating (C0)	40 kN
Fatigue load limit (Pu)	1,7
Category	Flange Block Bearings
Inventory	0.0
Manufacturer Name	SKF
Minimum Buy Quantity	N/A
Weight / Kilogram	4.956
EAN	7316577036513
Product Group	M06110
Number of Mounting Holes	4
Mounting Method	Set Screw
Housing Style	4 Bolt Square Flange Block



IFB Roller Industry Co.,Ltd

Rolling Element	Ball Bearing
Housing Material	Cast Iron
Expansion / Non-expansion	Non-expansion
Mounting Bolts	16 Millimeter
Relubricatable	Yes
Insert Part Number	YAR 213-2F
Seals	M Seal
Housing Configuration	1 Piece Solid
Pilot Configuration	No Pilot
Inch - Metric	Metric
Long Description	4 Bolt Square Flange Block; 65MM Bore; 211MM Bolt Circle; 149.5MM Bolt Spacing; 1 Piece Solid; Set Screw Mount; Cast Iron; Ball Bearing; 68.3MM Length Thru Bore; Relubricatable; M Seal Seals
Other Features	Single Row Standard Duty Wide Inner Race Open End Has Flinger Y Bearing
Category	Flange Block
UNSPSC	31171501
Harmonized Tariff Code	8483.20.40.40
Noun	Bearing
Keyword String	Flanged
Manufacturer URL	http://www.skf.com
Manufacturer Item Number	FY 65 TF
Weight / LBS	11.7
Bolt Spacing	5.886 Inch 149.5 Millimeter
Bore	2.559 Inch 65 Millimeter
Cartridge Pilot Depth	0 Inch 0 Millimeter
Nominal Bolt Circle Diameter Round	8.3 Inch 211 Millimeter



IFB Roller Industry Co.,Ltd

Cartridge Pilot Diameter	0 Inch 0 Millimeter
Length Thru Bore	2.689 Inch 68.3 Millimeter
bore diameter:	65 mm
radial static load capacity:	40 kN
bolt center-to-center length:	149.5 mm
seal type:	Contact with Flinger
overall length/diameter:	187 mm
length through bore:	76.9 mm
bore type:	Round
operating temperature range:	Maximum of +110 ° F
duty type:	Standard Duty
finish/coating:	Uncoated
mounting type:	Four-Bolt Flange
maximum rpm:	3000 RPM
housing material:	Cast Iron
lubrication type:	Lubrication Fitting
locking device:	Set Screw
series:	FY
expansion type:	Non-Expansion Bearing (Fixed)
replacement bearing:	YAR 213-2F
radial dynamic load capacity:	57.2 kN
manufacturer upc number:	7316577036513
Housing material	Cast iron
D _a	161.9 mm
D _{b1}	142 mm
D _{b2}	154 mm
A	52.5 mm
A ₁	17 mm
A ₃	3.2 mm
A ₅	35.5 mm



IFB Roller Industry Co.,Ltd

s_1	42.9 mm
R_G	1/4-28 UNF
R_1	34.5 mm
D_N	6.5 mm
SW_N	7 mm
G_N	1/4-28 SAE-LT
J_6	169 mm
J_7	51 mm
N_4	4 mm
Basic dynamic load rating C	57.2 kN
Basic static load rating C_0	40 kN
Fatigue load limit P_u	1.7 kN
Limiting speed	3000 r/min
Mass bearing unit	4.7 kg
Thread grub screw G_2	M10x1
Hexagonal key size for grub screw N	5 mm
Recommended tightening torque for grub screw	16.5 N · m
Recommended diameter for attachment bolts, mm G	16 mm
Recommended diameter for attachment bolts, inch G	0.625 in